



Open CASCADE Technology 5.2 Overview

Open CASCADE Technology 5.2 is a minor release of Open CASCADE introducing new features and improvements over the previous 5.1 minor and maintenance releases

What's New in Open CASCADE Technology 5.2 ?

New Features

This new minor release of Open CASCADE Technology 5.2 introduces quite a number of new features and improved traditional functionality along with certain changes over the previous public release 5.1 and maintenance releases 5.1.x exclusively available to the customers. This new release brings more opportunities to Open CASCADE users.

Visualization:

- A new component for visualizing meshes has been included into Open CASCADE Technology - **MeshVS** (Mesh Visualization Service). It extends 3D visualization capabilities of Open CASCADE Technology and provides flexible means for displaying meshes along with associated pre- and post-processor data. It is easy to integrate the MeshVS component into any mesh-related application.

Data Exchange:

- Open CASCADE STEP Interface has been extended to handle STEP materials, dimensions and geometric tolerances.

Test Harness:

- Draw Test Harness has been made a single executable – DRAWEXE with plug-in architecture and dynamically loaded commands.

OCAF:

- In addition to the Standard persistence schema XML and Binary persistence schemas have been added to Open CASCADE Technology. All schemas are independent of each other, therefore any OCAF application can use any schema or any of their combination.

.NET support:

- Support of Microsoft .NET has been added and demonstrated with the help of a new C# programming sample.

STL Streams support:

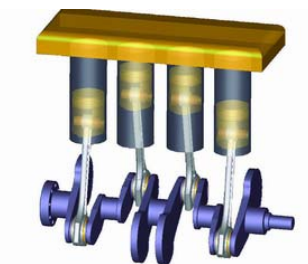
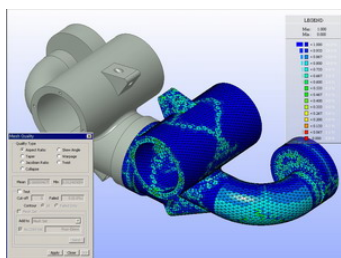
- Open CASCADE Technology now supports STL streams.

New operating systems:

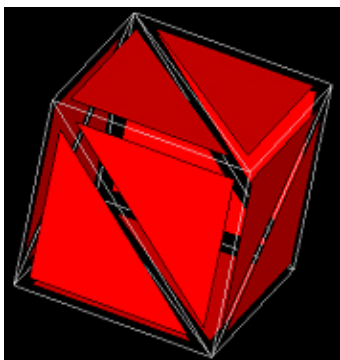
- Open CASCADE now officially supports 3 new operating systems:
 - Windows XP
 - Red Hat 8.0
 - Mandrake 8.0

New compilers:

- Microsoft Visual C++ 7.1
- gcc 3.2



Improvements

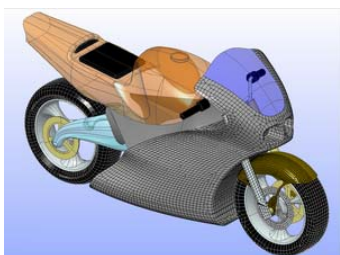


A significant portion of improvements in this release is introduced in **Modeling Algorithms**:

- Surface-to-Surface Intersection algorithm has been improved which is used by many modeling algorithms (such as Boolean Operations, fillets, and others);
- Local operation and the 3D offset have been ported to New Boolean Operations.

Visualization:

- Selection highlighting option in 3D has been improved. Now a large number of objects (up to thousands) can be highlighted in the 3D Viewer.
- A font rendering approach has been improved on Windows platform. In addition to the previous bitmap mode a new one – based on texture-mapped fonts – has been implemented, which is proved to be faster especially on larger portions of texts.



Documentation:

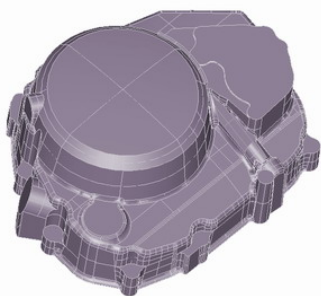
- WOK User's Guide has been extended to describe the use of Java extractor.
- Reference Documentation has been updated, including the description of Pipes and Offsets.

Performance improvements:

- Various performance improvements especially in translation of some STEP and IGES cases and in OCAF.

Installation Procedure

The **installation procedure** of Open CASCADE Technology is now fully cross-platform! The installation process with its new visual line gives an overview of major Open CASCADE functionality and new features in the release.



For more details about these new features, improvements and corrected bugs please refer to the Release Notes and Reference Documentation supplied with Open CASCADE Technology. We also recommend to regularly visit our web site for latest news and updates.

Quality

Numerous improvements and bug corrections

Open CASCADE Technology 5.2 features more than 170 corrections over the previous minor version 5.1 released in October 2003.



Supported platforms

Supported platforms now are Windows XP/2000/NT 4.0 SP3, Mandrake 7.X, 8.0, Red Hat 7.X, 8.0 and Sun Solaris 2.6. We remind you that since version 5.1 Open CASCADE Technology no longer supports Windows 98 and Red Hat 6.0 operating systems.

For more details about supported platforms please refer to Technical Requirements on <http://www.opencascade.org/getoccc/require/>

CONTACT US NOW:

BY PHONE OR E-MAIL

Call the Open CASCADE sales team at +33 (0)1 69 35 44 52 or send an e-mail to marketing.contact@opencascade.com.

For more information on Open CASCADE SA, visit <http://www.opencascade.com>.

Images © Open CASCADE, MIDAS IT, Samtech